



Stock Symbol: CLCS

# Introduction

## Q4 | 2018







Stock Symbol: CLCS

## Safe Harbor Statement

With the exception of historical information, the matters discussed in this presentation are forward-looking statements that involve a number of risks and uncertainties. The actual future results of Cell Source could differ significantly from those statements. Factors that could cause actual results to differ materially include risks and uncertainties such as the inability to finance the company's operations, inability to hire and retain qualified personnel, and changes in the general economic climate. In some cases, you can identify forward-looking statements by terminology such as "may," "will," "should," "expect," "plan," "anticipate," "believe," "estimate," "predict," "potential" or "continue," the negative of such terms, or other comparable terminology. These statements are only predictions. Although we believe that the expectations reflected in the forward-looking statements are reasonable, such statements should not be regarded as a representation by Cell Source, or any other person, that such forward-looking statements will be achieved. We undertake no duty to update any of the forward-looking statements, whether as a result of new information, future events or otherwise. In light of the foregoing, readers are cautioned not to place undue reliance on such forward-looking statements. This release does not constitute an offer to sell or a solicitation of offers to buy any securities of any entity.





Stock Symbol: CLCS

## Introduction Q4 | 2018



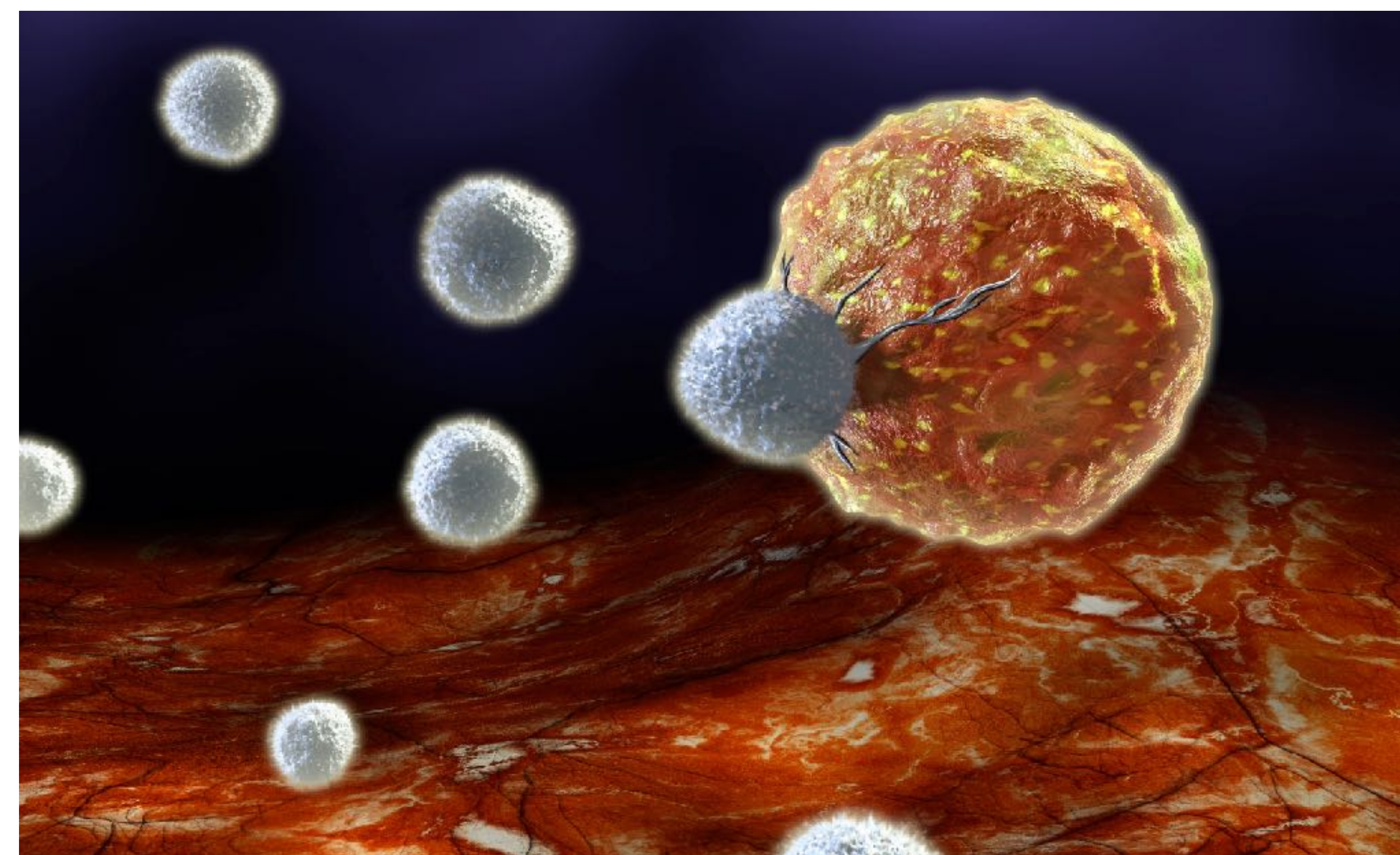
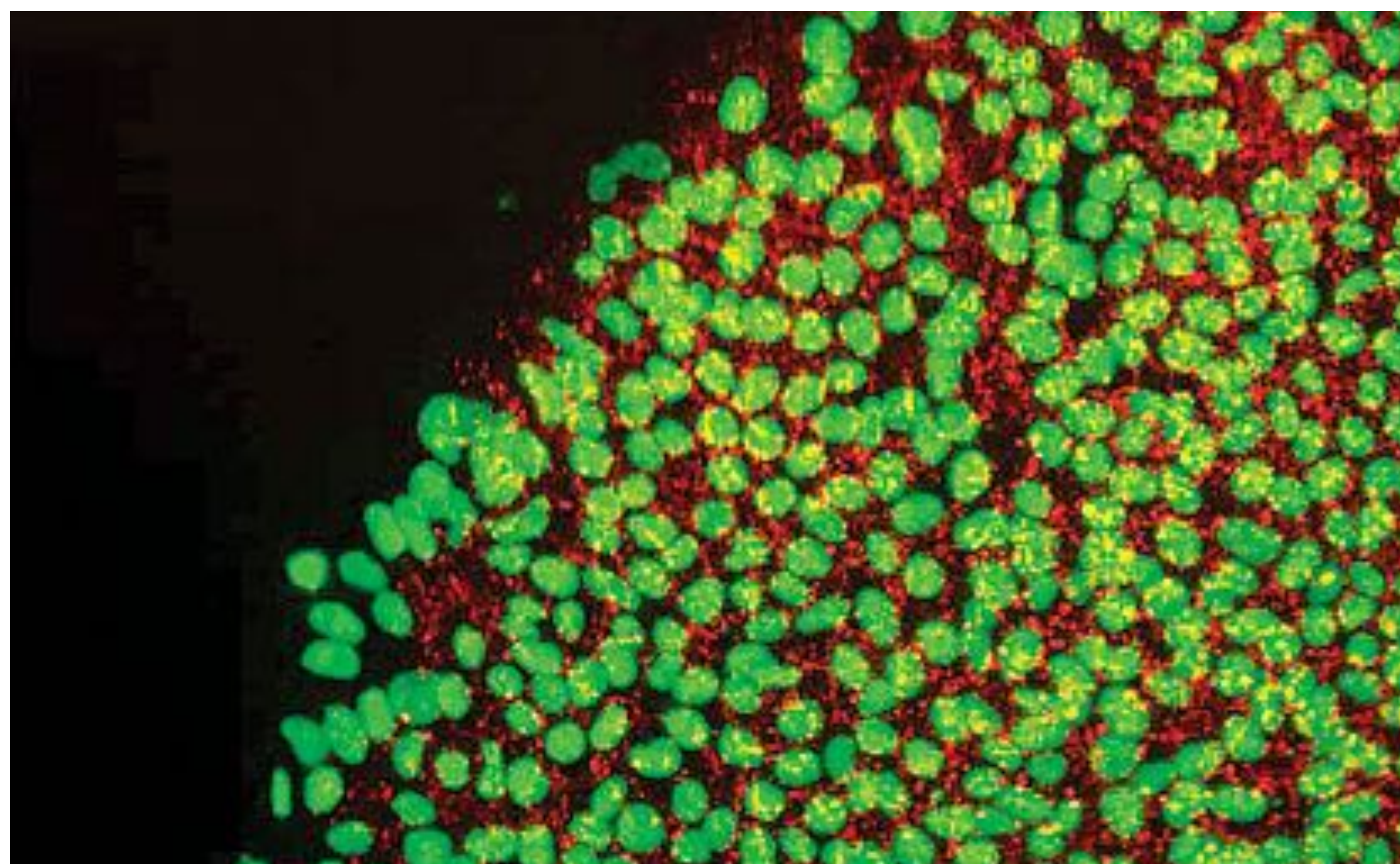
**Cell Source** is an innovative biotechnology company focused on developing breakthrough cell therapy treatments based on the management of immune tolerance

The company's patented **Veto Cell** technology\* represents a major breakthrough in safe, selective immune system response management

**Veto Cell** technology addresses one of the most fundamental challenges in human immunology: how to tune immune response so that it tolerates specific “desirable” foreign cells while continuing to attack all other potential threats

\* Licensed exclusively from the Weizmann Institute of Science





## Cell Source's Areas of Focus

### Cell Therapy

Part of a new wave of medicine using living whole human cells instead of synthetic chemical compounds to treat disease. Known mostly for use in bone marrow transplantation, cell therapy is now moving into the mainstream for the treatment of a broader set of diseases including a variety of cancers

### Immunotherapy

An area within cell therapy that involves using the immune system, whose role is normally to reject foreign incursions, to instead directly treat disease





## Cell Source's Unique, Proprietary Veto Cell Technologies\*

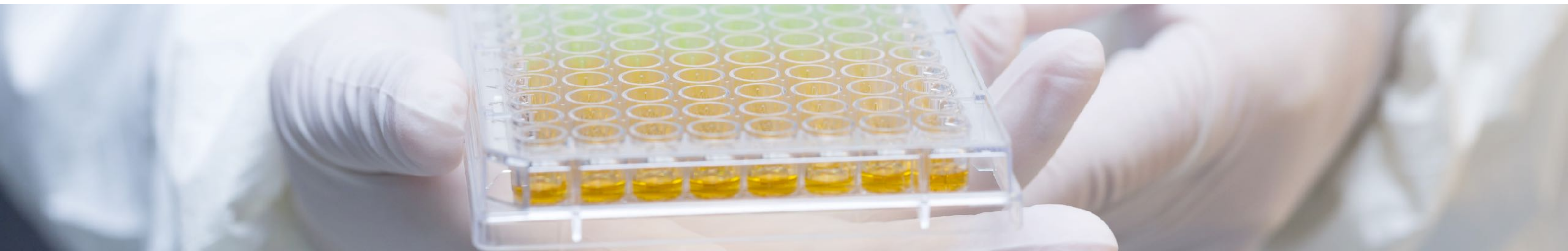
---

**Veto Cells enable doctors to selectively manage patients' immune system responses, facilitating a broad range of diseases that effect millions of people: targeted therapies for bone marrow and organ transplants, cancer treatments, and treating other severe diseases**

Today, in order to coax the body into accepting organ transplants and other treatments, doctors must suppress a patient's entire immune system using radiation and chemotherapy, leaving the patient vulnerable to infection

**Cell Source's Veto cell technology\*** allows transplants to be accepted while leaving the rest of the immune system intact

\* Licensed exclusively from the Weizmann Institute of Science







## Applications: Stem Cell\* Transplants

Bone marrow transplants are an important treatment for cancer and other diseases. Today, donor-derived bone marrow transplants are only given to less than 50,000 patients worldwide each year, and mortality rates are very high

Successful **Veto Cell treatments** are expected to significantly broaden the use of this life-saving treatment by enabling mismatched donors and otherwise making bone marrow transplants safer and more accessible, so that many older or weaker patients can benefit from this potentially life-saving treatment

\* Includes bone marrow transplants







## Applications: Organ Transplants

**Patients today need to find fully matched donors (many die while on waiting lists) and, even when successful, transplant patients require lifelong, daily anti-rejection therapy which weakens the immune system, impairs quality of life, and reduces life expectancy**

**Veto Cell treatment** can make donor mismatched kidney transplants available to a far broader pool of patients and potentially eliminate the need for lifelong, daily post-transplant anti-rejection treatments, thus improving life quality, reducing cost of care, and increasing life expectancy





## Applications: Cancer Treatment Therapies

CAR-T cell therapy, a very promising emerging cancer treatment, is currently confined to the niche of “personalized medicine” – using the patient’s own cells, which makes the treatments very expensive (over \$300,000 per infusion). The vision for this game-changing breakthrough in cancer treatment is for it to become a universal, off-the-shelf product that can enjoy drug-like distribution economics

Based on preclinical trials combining Veto Cells with genetically modified cells, **CAR-T Veto combined therapy** has the potential to turn CAR-T into a successful off-the-shelf treatment for both blood cell and solid tumors







**Rejection-free bone marrow and organ transplants are becoming a reality.**

**“A donor for every patient.”**  
**Exact match no longer required.**

Cell Source is developing a proprietary process to make donor cells and even whole organs universally acceptable to recipients, bypassing the body's typical immune response to foreign tissue

The goals of Veto Cell therapy are to reduce immune suppression, increase engraftment, virtually eliminate Graft vs. Host Disease (GvHD), control viral infections, and ultimately enable virtually all patients to find donors for both bone marrow and kidney transplants

**Veto Cell technologies overcome transplant rejection.**

Donor Veto Cells act as decoys that attract and then delete the transplant recipient's anti-donor (transplant-rejecting) T-Cells, overcoming transplant rejection while leaving the rest of the immune system intact to fight infection and protect already weakened patients from secondary complications





Cell Source's technology was invented by Professor Yair Reisner and his team at the internationally-recognized Weizmann Institute of Science, one of Israel's leading scientific research centers, where he served as the Head of Immunology. The core technology has already been granted patents, with patents pending for the latest developments.

In preclinical trials using mice, Cell Source's technology has been successfully demonstrated to significantly increase success rates of donor-mismatched bone marrow transplantations under mild levels of immune suppression.



## **World-Class Technology Meets Tremendous Opportunity.**

Cell Source holds the exclusive worldwide license to Professor Reisner's Veto Cell technology, which is owned by the Weizmann Institute.

Cell Source is currently pioneering anti-viral Veto Cell therapy for transplantation, with planned human trials at a top-tier US cancer treatment center. The company's prestigious Scientific Advisory Board includes national leaders in transplantation and cancer treatment from Stanford University (CA), Mount Sinai Medical Center (NY), University of Oxford (UK), and The University of Wurzburg\* (Germany).

Cell Source is poised to capitalize on growing market opportunities including the \$6.4 billion global allogeneic bone marrow transplant market (2015) and the \$8.7 billion USHSCT market (2016).

\* Where Nobel Prize winner Wilhem Röntgen invented the X-Ray machine.







**CELL  
SOURCE**

Stock Symbol: CLCS

**Thank you for your  
time and interest.**

**[www.cell-source.com](http://www.cell-source.com)**