



Third Quarter 2020 Earnings

November 4, 2020



NYSE: TREC | www.trecora.com

Forward Looking Statements

Forward-looking statements involve known and unknown risks, uncertainties, assumptions, and other important factors that could cause the actual results, performance or our achievements, or industry results, to differ materially from historical results, any future results, or performance or achievements expressed or implied by such forward-looking statements. Such risks, uncertainties and factors include, but are not limited to the impacts of general economic and financial conditions domestically and internationally; insufficient cash flows from operating activities; our ability to attract and retain key employees; feedstock, product and mineral prices; feedstock availability and our ability to access third party transportation; competition; industry cycles; natural disasters or other severe weather events, health epidemics and pandemics (including the COVID-19 pandemic) and terrorist attacks; our ability to consummate extraordinary transactions, including acquisitions and dispositions, and realize the financial and strategic goals of such transactions; technological developments and our ability to maintain, expand and upgrade our facilities; regulatory changes; environmental matters; lawsuits; outstanding debt and other financial and legal obligations (including having to return the amounts borrowed under the Paycheck Protection Program or failing to qualify for forgiveness of such loans, in whole or in part); difficulties in obtaining additional financing on favorable conditions, or at all; local business risks in foreign countries, including civil unrest and military or political conflict, local regulatory and legal environments and foreign currency fluctuations; and other risks detailed in our latest Annual Report on Form 10-K, including but not limited to: "Part I, Item 1A. Risk Factors" and "Part II, Item 7. Management's Discussion and Analysis of Financial Condition and Results of Operations" therein, and in our other filings with the Securities and Exchange Commission (the "SEC"). Many of these risks and uncertainties are currently amplified by and will continue to be amplified by, or in the future may be amplified by, the COVID-19 pandemic. Further, the COVID-19 pandemic may also affect our operating and financial results in a manner that is not presently known to us.

There may be other factors of which we are currently unaware or deem immaterial that may cause our actual results to differ materially from the forward-looking statements. In addition, to the extent any inconsistency or conflict exists between the information included in this report and the information included in our prior releases, reports and other filings with the SEC, the information contained in this report updates and supersedes such information.

Forward-looking statements are based on current plans, estimates, assumptions and projections, and, therefore, you should not place undue reliance on them. Forward-looking statements speak only as of the date they are made, and we undertake no obligation to update them in light of new information or future events.

Non-GAAP Measures

This presentation includes the use of both U.S. generally accepted accounting principles ("GAAP") and non-GAAP financial measures. The Company believes certain financial measures, such as EBITDA from continuing operations and Adjusted EBITDA from continuing operations, which are non-GAAP measures, provide users of our financial statements with supplemental information that may be useful in evaluating our operating performance. The Company believes that such non-GAAP measures, when read in conjunction with our operating results presented under GAAP, can be used to better assess our performance from period to period and relative to performance of other companies in our industry, without regard to financing methods, historical cost basis or capital structure. These measures are not measures of financial performance or liquidity under GAAP and should be considered in addition to, and not as a substitute for, analysis of our results under GAAP.

We define EBITDA from continuing operations as net income (loss) from continuing operations plus interest expense, income tax expense (benefit), depreciation and amortization. We define Adjusted EBITDA from continuing operations as EBITDA from continuing operations plus share-based compensation, plus restructuring and severance expenses, plus impairment losses and plus or minus gains or losses on disposal of fixed assets.

These non-GAAP measures have been reconciled to the nearest GAAP measure for historical periods in the tables below entitled "Reconciliation of Selected GAAP Measures to Non-GAAP Measures. However, the Company is unable to reconcile its expectations regarding Adjusted EBITDA growth in 2021 to the most directly comparable GAAP measures without unreasonable efforts because the Company is currently unable to predict with a reasonable degree of certainty the type and extent of certain items that would be expected to impact GAAP measures for these periods but would not impact the non-GAAP measures.

Q3 Highlights



Successful completion of AMAK sale resulting in net cash proceeds of \$61 million



Adjusted EBITDA from cont. ops: \$7.1MM; +69% vs. Q2'20



Total consolidated cash: \$51.9MM at end of September



Paydown of \$31.1MM of debt (total debt of \$47.1MM vs. \$78.2MM at the end of June); leverage reduced to 1.6x



Growth initiatives: +\$4MM of annualized incremental EBITDA in 2020 on go-forward run-rate basis

Net Debt and Cash Summary

Strong
Balance
Sheet

\$ millions	June 30, 2020	September 30, 2020
Total Bank Debt	\$78.2	\$47.1
PPP Loans	\$6.1	\$6.1
Total Debt	\$84.3	\$53.2
Cash on Balance Sheet	\$29.9	\$51.9
Total Debt Net of Cash	\$54.4	\$1.3

Ample
Liquidity

\$ millions	Pro Forma	Note
Cash Balance	\$51.9	As of September 30, 2020
Tax Refunds (CARES Act)	\$16.5	
Pro Forma Cash Balance	\$68.4	
Total Pro Forma Net Debt	\$(15.2)	

Q3 Trecora Performance Summary

	Q3'20	Q2'20	Q1'20	Q4'19	Q3'19	YTD'20	YTD'19
Diluted EPS from continuing operations	\$0.04	\$(0.07)	\$0.23	\$(0.61)	\$0.06	\$0.20	\$0.23
Net Income (Loss) from continuing operations	\$1.1	\$(1.9)	\$5.9	\$(18.7)	\$1.6	\$5.1	\$5.9
Adjusted EBITDA from continuing operations ⁽¹⁾	\$7.1	\$4.2	\$5.5	\$6.4	\$6.9	\$16.8	\$24.6
Gross Margin	17.7%	15.2%	13.0%	13.5%	15.3%	15.1%	15.3%
Cap Ex	\$2.7	\$5.7	\$1.9	\$3.8	\$2.5	\$10.3	\$6.3
Total Bank Debt	\$47.1	\$78.2	\$102.2	\$83.3	\$89.3	\$47.1	\$89.3

(1) See non-GAAP reconciliations included in the accompanying financial tables for the reconciliation of each non-GAAP measure to its more directly comparable GAAP measure.

- Paydown of \$31.1 million of debt; End of September bank debt of \$47.1 million (vs. \$78.2 million at the end of June), the lowest level since September 2014
- Feedstock costs declined almost 24% from Q3'19 improving Q3'20 gross margin by 240 basis points
- Q3 capex incl. approx. \$0.5 million for rebuild and repair of feedstock unit

Q3 Business Segment Performance Summary

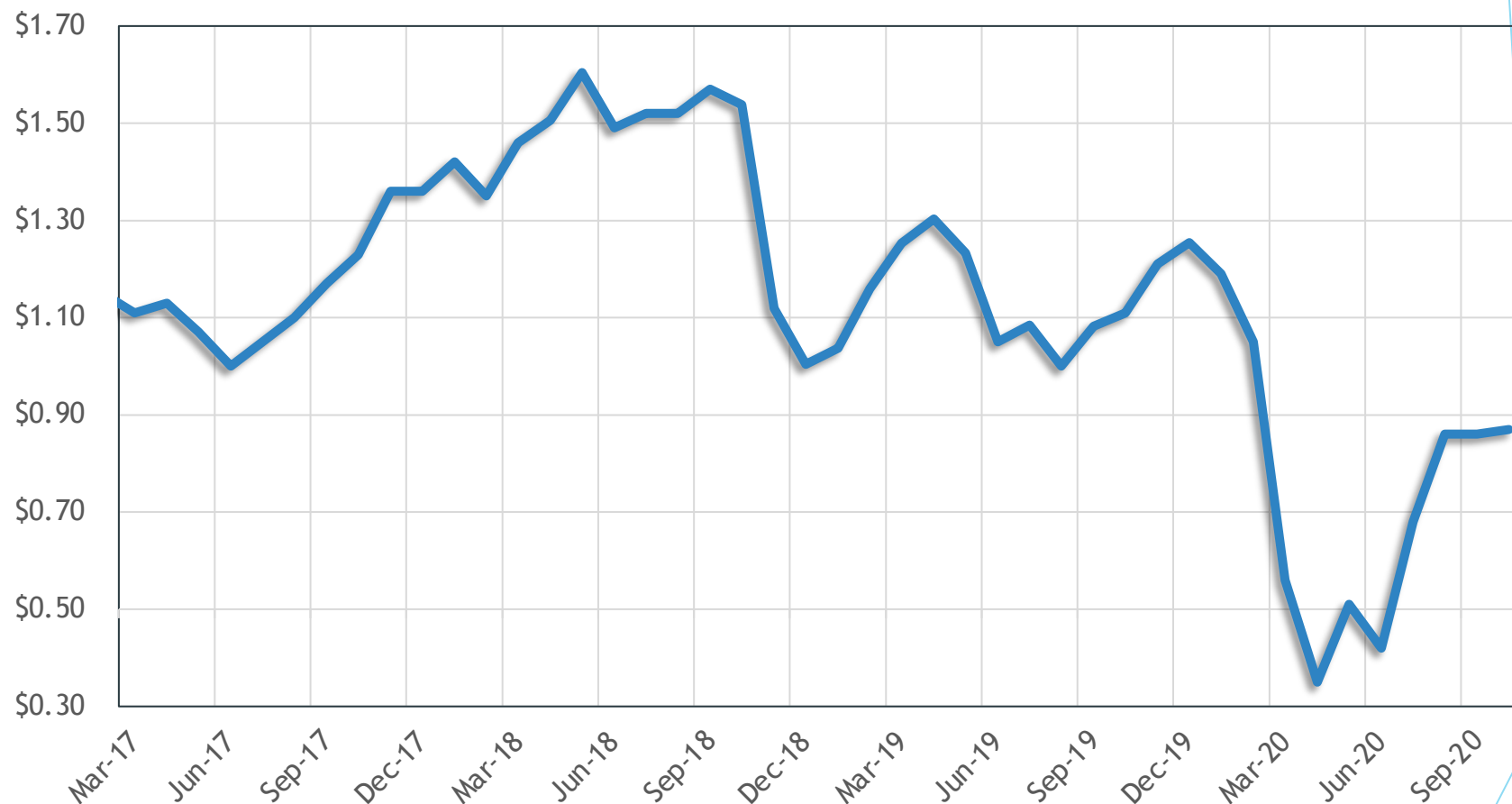
	Specialty Petrochemicals Sales Volume (million gallons)				
	Q3'20	Q2'20	Q1'20	Q4'19	Q3'19
All Products	17.9	15.3	19.7	20.3	20.5
Prime Products	14.7	13.1	16.2	16.3	16.4
By-products	3.1	2.3	3.5	4.0	4.1

- Prime products and by-products continued to be impacted by weakened end-use market demand including durable goods such as automotive and construction
- By-product margin in Q3'20 of \$0.10 per gallon compared to \$0.36 per gallon in Q3'19

	Specialty Waxes				
	Q3'20	Q2'20	Q1'20	Q4'19	Q3'19
Wax Revenue (\$mm)	\$6.0	\$5.5	\$6.8	\$6.0	\$5.8
Wax Sales Volume (mm lbs)	8.8	8.4	10.2	7.9	8.6
Avg. Wax Sales Price (\$/lb)	\$0.66	\$0.65	\$0.66	\$0.75	\$0.67
Custom Processing Revenue (\$mm)	\$2.5	\$2.8	\$3.6	\$2.9	\$2.4

- Higher sales volumes in Q3'20, reflect no material disruptions to feed supply during the quarter, as there were in Q3'19

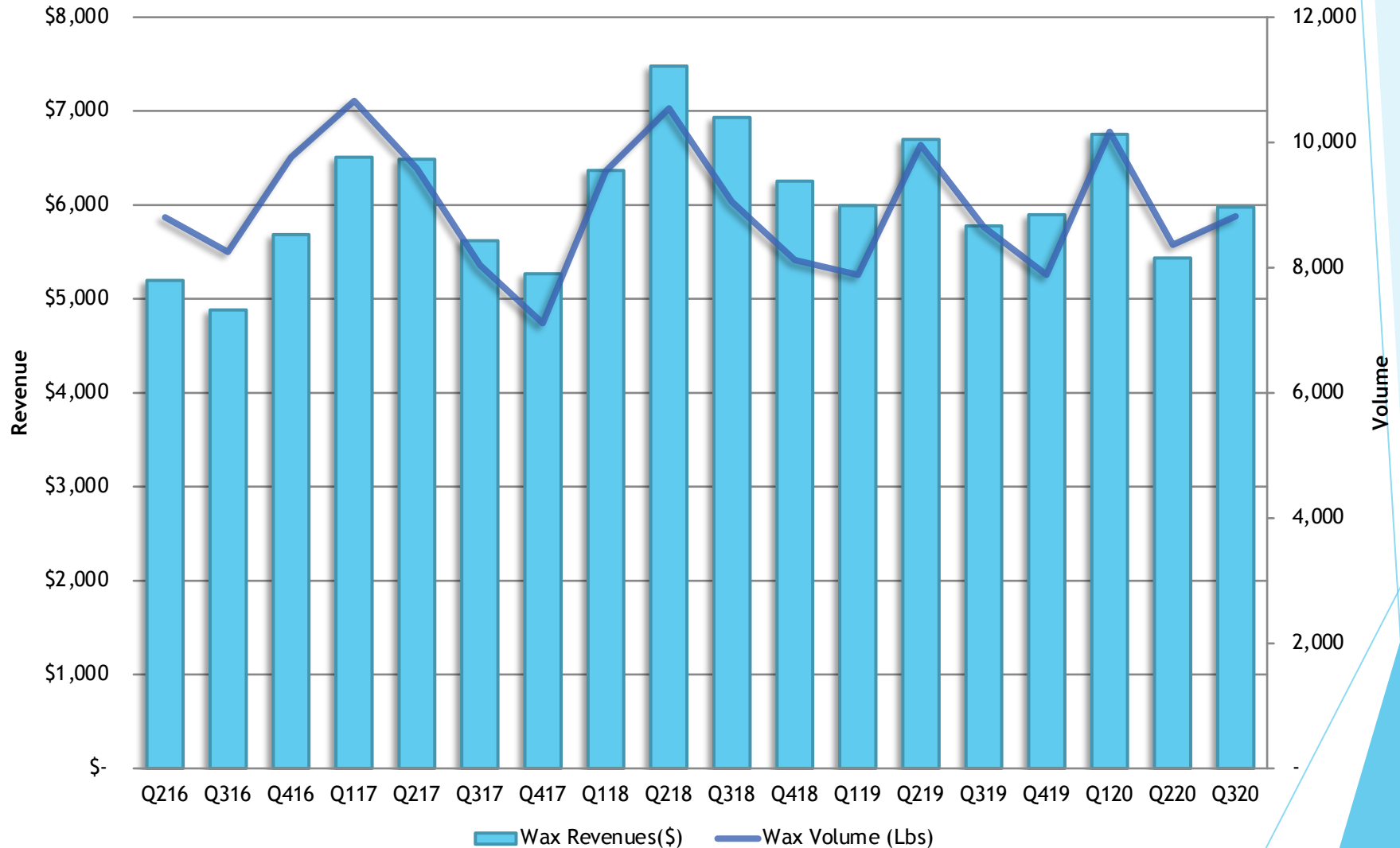
Petrochemical Feedstock - Market Price of Natural Gasoline Per Gallon



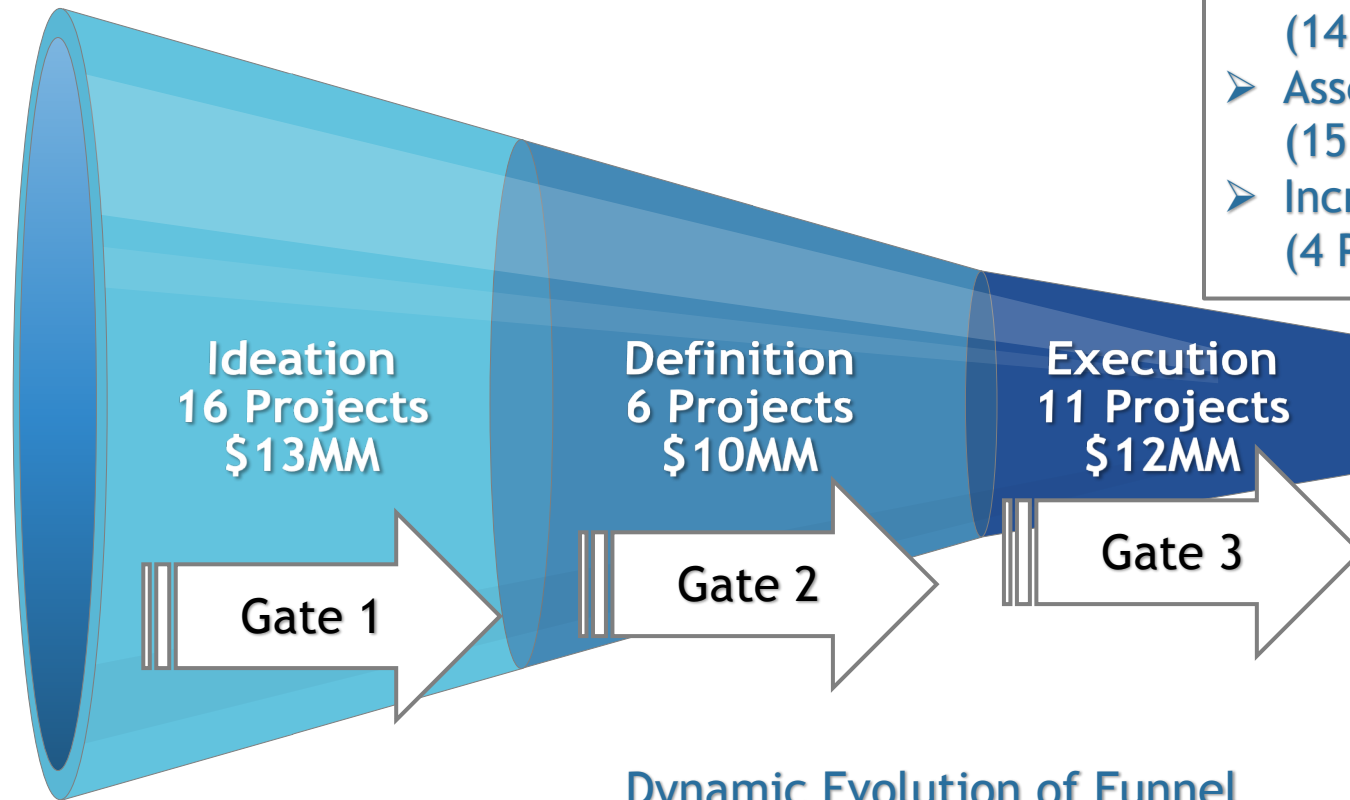
(Source: OPIS)

Specialty Waxes

Wax Volume and Revenue
(in thousands)



Organic Growth Execution Funnel



- SHR & TC Portfolio
- New Markets/Products: (14 Projects)
 - Asset Utilization: (15 Projects)
 - Increasing Productivity: (4 Projects)

Dynamic Evolution of Funnel

	Ideation	Definition	Execution	Total # of Projects
Q1 # of Projects	17	4	4	25
Q2 # of Projects	14	8	4	26
Q3 # of Projects	16	6	11	33

**For more information,
please visit our website:**

<http://www.trecora.com>

Appendix Below

Reconciliation Of Selected GAAP Measures To Non-GAAP Measures

	THREE MONTHS ENDED				THREE MONTHS ENDED			
	9/30/20				9/30/19			
	SPEC. PETRO	SPEC. WAX	CORP	TREC	SPEC. PETRO	SPEC. WAX	CORP	TREC
NET INCOME (LOSS)	\$ 4,161	\$ (1,267)	\$ 19,538	\$ 22,432	\$ 6,278	\$ (2,071)	\$ (3,626)	\$ 581
Income (Loss) from discontinued operations, net of tax	-	-	21,324	21,324	-	-	(958)	(958)
Income (Loss) from continuing operations *	\$ 4,161	\$ (1,267)	\$ (1,786)	\$ 1,108	\$ 6,278	\$ (2,071)	\$ (2,668)	\$ 1,539
Interest	507	-	1	508	895	316	-	1,211
Income tax expense (benefit)	1,150	(26)	(271)	853	303	-	(76)	227
Depreciation and amortization	183	24	3	210	171	24	13	208
Depreciation and amortization in cost of sales	2,484	1,403	-	3,887	1,729	1,524	1	3,254
EBITDA from continuing operations *	8,485	134	(2,053)	6,566	9,376	(207)	(2,730)	6,439
Share based compensation	-	-	489	489	-	-	415	415
Adjusted EBITDA from continuing operations *	<u>\$ 8,485</u>	<u>\$ 134</u>	<u>\$ (1,564)</u>	<u>\$ 7,055</u>	<u>\$ 9,376</u>	<u>\$ (207)</u>	<u>\$ (2,315)</u>	<u>\$ 6,854</u>
Revenue	39,223	8,523	-	47,746	54,485	8,230	-	62,715
	NINE MONTHS ENDED				NINE MONTHS ENDED			
	9/30/20				9/30/19			
	SPEC. PETRO	SPEC. WAX	CORP	TREC	SPEC. PETRO	SPEC. WAX	CORP	TREC
NET INCOME (LOSS)	\$ 10,150	\$ (385)	\$ 21,526	\$ 31,291	\$ 17,086	\$ (5,623)	\$ (6,727)	\$ 4,736
Gain (Loss) from discontinued operations, net of tax	-	-	26,179	26,179	-	-	(1,120)	(1,120)
Income (Loss) from continuing operations *	\$ 10,150	\$ (385)	\$ (4,653)	\$ 5,112	\$ 17,086	\$ (5,623)	\$ (5,607)	\$ 5,856
Interest	2,158	-	1	2,159	3,143	967	1	4,111
Income tax expense (benefit)	(249)	(1,595)	(2,098)	(3,942)	3,006	-	(1,594)	1,412
Depreciation and amortization	554	71	13	638	512	72	45	629
Depreciation and amortization in cost of sales	7,351	4,022	-	11,373	7,387	4,223	1	11,611
EBITDA from continuing operations *	19,964	2,113	(6,737)	15,340	31,134	(361)	(7,154)	23,619
Share based compensation	-	-	1,422	1,422	-	-	973	973
(Gain) Loss on disposal of assets	(8)	17	-	9	-	-	-	-
Adjusted EBITDA from continuing operations *	<u>\$ 19,956</u>	<u>\$ 2,130</u>	<u>\$ (5,315)</u>	<u>\$ 16,771</u>	<u>\$ 31,134</u>	<u>\$ (361)</u>	<u>\$ (6,181)</u>	<u>\$ 24,592</u>
Revenue	123,248	27,239	-	150,487	171,468	25,773	-	197,241
* Discontinued Operations only applicable within the Corporate segment								