



Clean Coal Technologies, Inc.

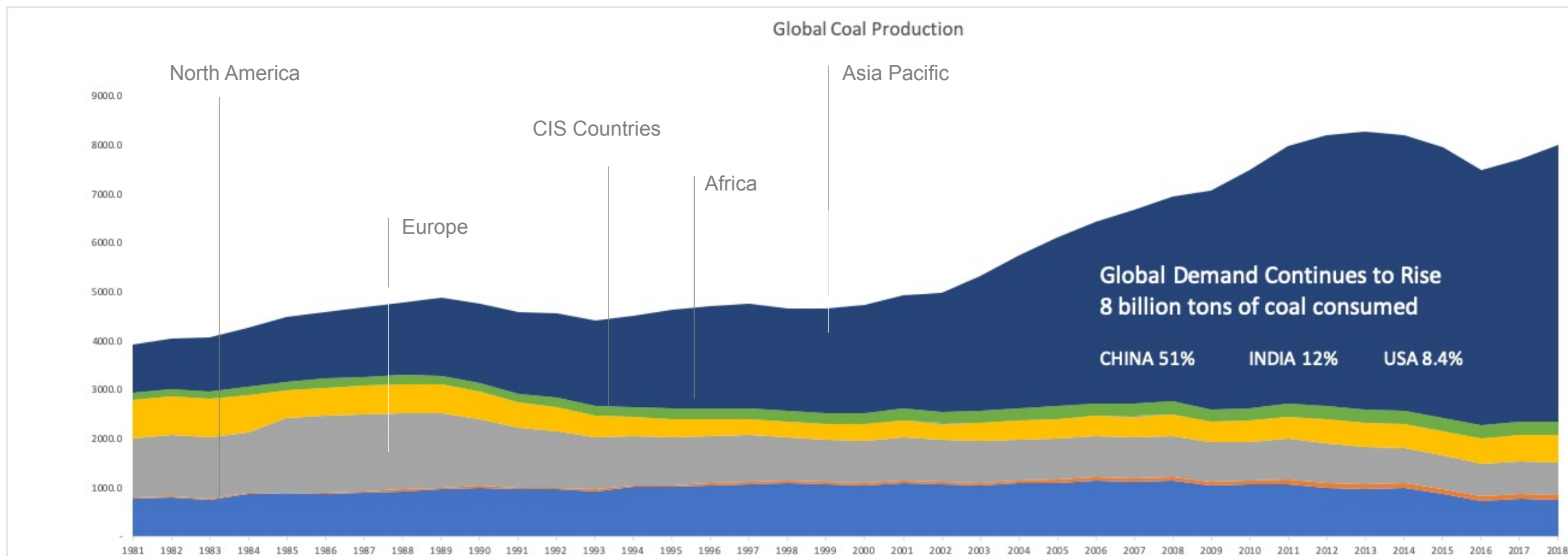
The Pristine™ Suite of Technologies

OTCQB: CCTC



Global Demand For Coal Continues To Rise.

In 2018, coal consumption grew by 1.4% with production growing by 4.3%. Carbon emissions grew by 2%.



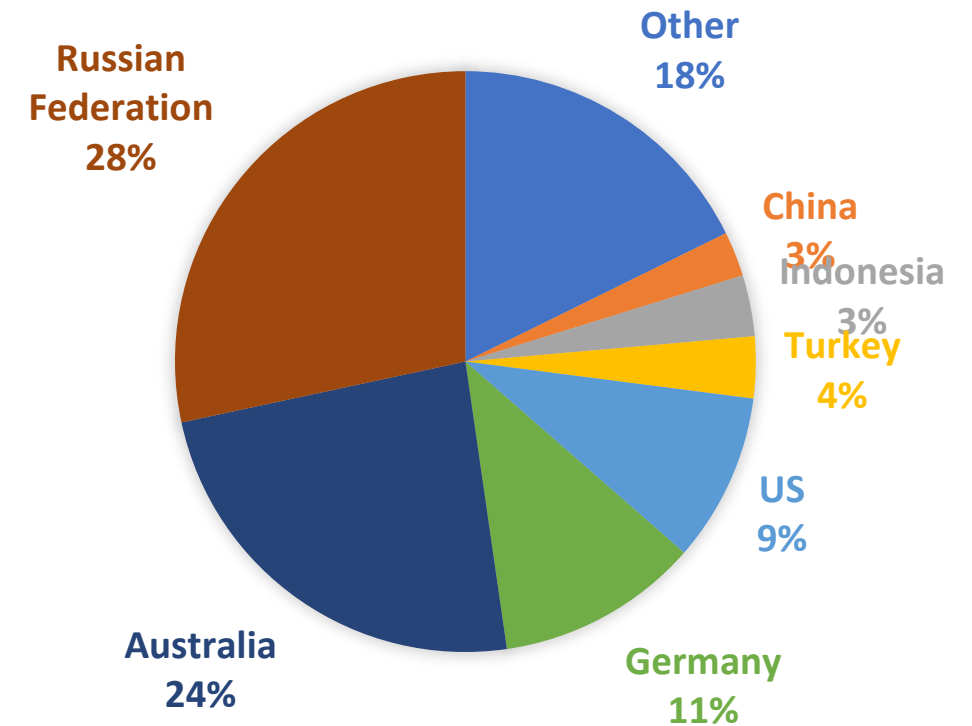


320 Billion tons of world coal reserves are low-rank coals (LRC) which is the target coal for Pristine M

High moisture content
& low heating value

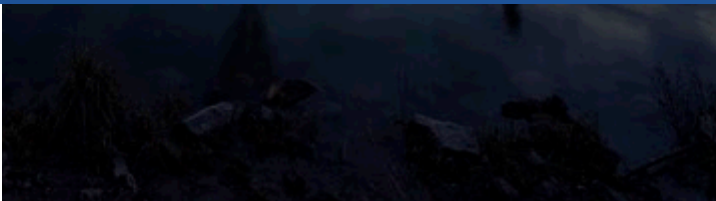


SUB- BITUMINIOUS AND LIGNITE COAL RESERVES





CCTI's Proprietary Technologies



Pristine™

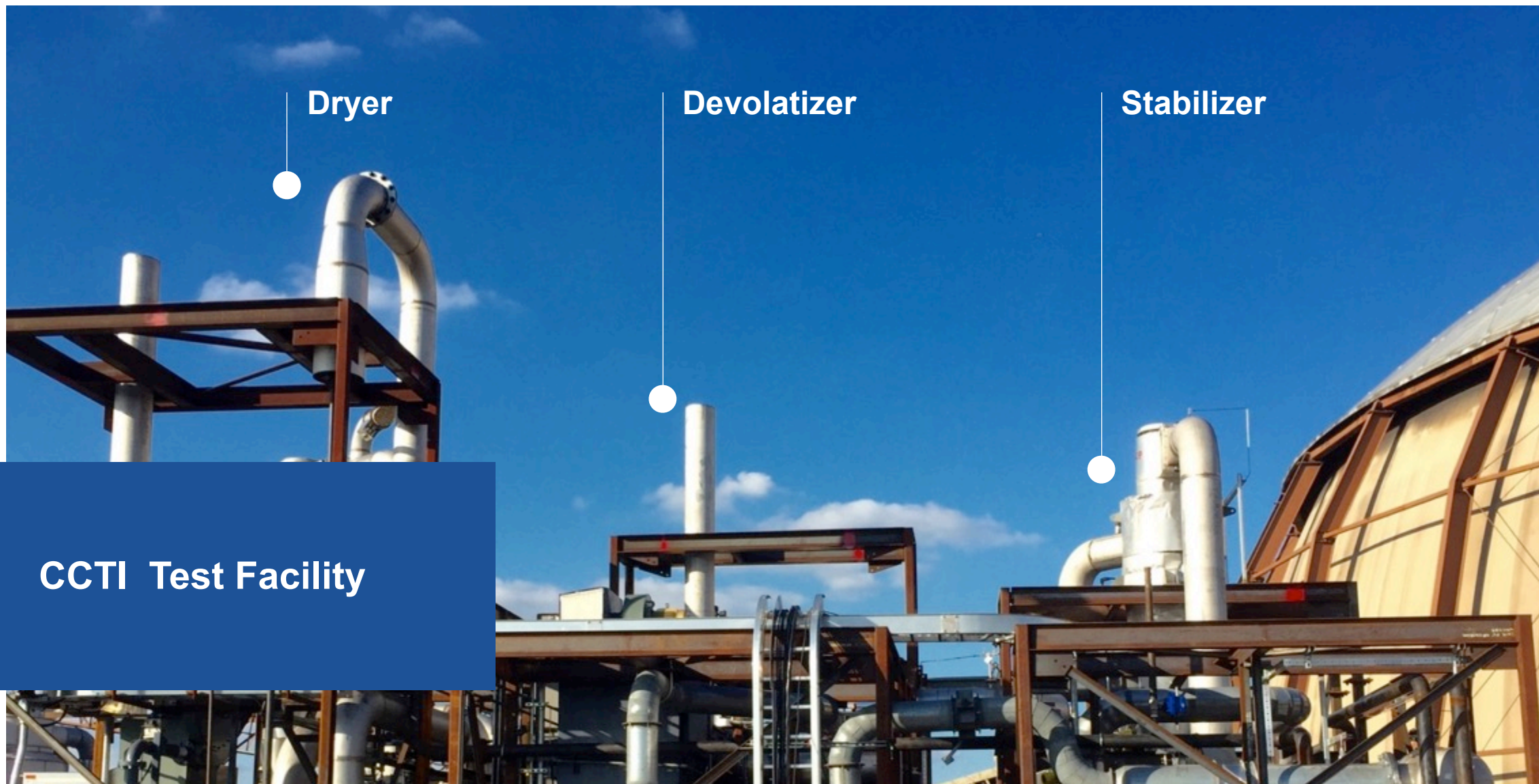
Upgrade low-rank high-moisture coal and extract valuable by-products

Pristine-SA™

Reduce coal to fixed carbon and co-fire with biomass

Pristine-M™

Upgrade high-moisture high-volatile coal and reduce moisture, transportation costs, coal dust, and carbon footprint



Dryer

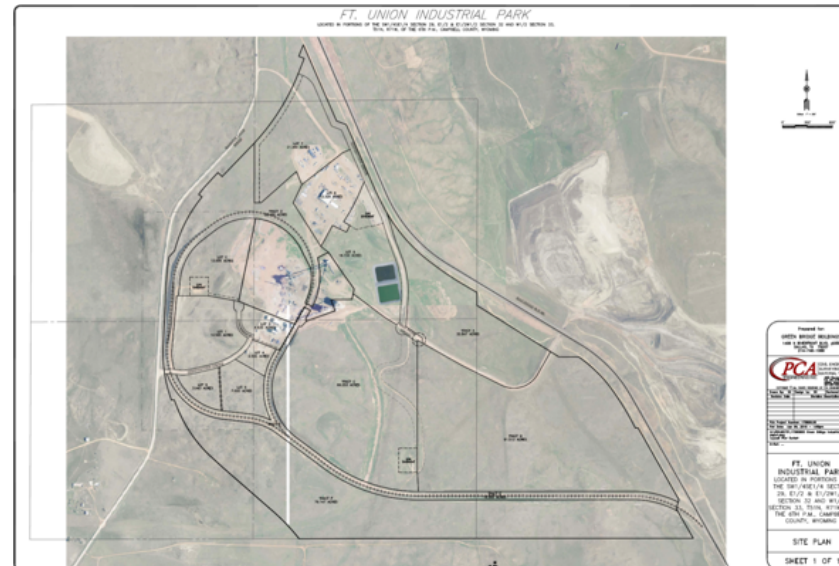
Devolatizer

Stabilizer

CCTI Test Facility



Current Plant Location: Fort Union, WY





Highlights of Pristine-M™ Technology

- No moisture re-absorption
- No spontaneous combustion
- No size degradation
- Ideal gasifier feedstock
- Optimal level of VM to sustain combustion
- Reductions in emissions of CO₂ and carbon footprint
- Dust-free end product
- Increase Boiler Efficiency

Weekly Coal Commodity Spot Prices - May 03, 2019

(USD Dollars Per Short Ton)

Region & BTU	Sulphur Content	Ash Range*	Week Ending 05/03/19
Central Appalachia 12,500 BTU	1.2 SO₂	6-13% - Average 9%	\$77.30
Northern Appalachia 13,000 BTU	<3.0 SO₂	5-20% - Average 10%	\$63.15
Illinois Basin 11,800 BTU	5.0 SO₂	8-15% - Average 10%	\$40.20
Powder River Basin 8,800 BTU	0.8 SO₂	4-10% - Average 7%	\$12.45
Uinta Basin 11,700 BTU	0.8 SO₂	6-18% - Average 12%	\$36.65



Plant Economics

Example using PRB coal and upgrading it to 11,800btu using Pristine M Technology @ 05/03/19

Operating Costs

USD\$

1mm tons of PRB coal @ 8,800btu			12,450,000
Utilized additional costs (slipstream of coal)	35.00%	350,000	4,357,500
Running costs (based on US labor rates)			1,500,000
Maintenance (based on US labor rates)			1,500,000
Total operating costs			19,807,500
Total capital costs (based on \$35m for 1mm ton per annum facility built in the US\$ - 25years @6% P.A implied interest charge)			2,706,066
Total costs			22,513,566
Price per ton to upgrade to 11,800 btu dust free coal			22.51
Compare to Illinois coal 11,800 btu 1mm ton			40,200,000
Arbitrage Value vs. 1m ton of Illinois coal			\$17,686,434 per 1m ton

CCTI Revenue Model

- License And Royalty
 - \$1 per ton upfront License Fee
 - \$3 per ton Royalty Fee for life

A 10mta facility will provide \$10m up-front followed by \$30m per year over a 25 year agreement

- Partnerships with Existing Coal Mines
- Mine Asset Acquisition
- By-Product Extraction and Rare Earth Mineral Revenue Stream



Next Steps for CCTI

Planned Milestones / Next Steps

Q3 2019 : Commence Re-Assembly of Test Facility

Q1 2020 : Commence Dry Test Runs
: DoE and NETL Approval Review

Q1 2020 : Commence Testing of US and International Coal
: Complete License Agreement with WNP
: Complete License Agreement with Jindal S&P

Q2 2020 : Commence Testing of Coal By-Products
: Testing of Rare Earth Minerals

2020 : FULL COMMERCIAL LAUNCH

Applications of Coal Beyond Energy Feedstock



What CCTI has done is developed a very intriguing technology.

Richard Horner

Director of Special Projects and Emerging Technology,
University of Wyoming. November 2017



We have validated that their technology does what it says on the packet.

Richard Horner

Director of Special Projects and Emerging Technology,
University of Wyoming. April 2019

Company Information & Partnerships

Robin T. Eves, CEO

+1203.918.2762

reves@cleancoaltechnologiesinc.com

Aiden Neary, COO/CFO

+1203.918.7706

aneary@cleancoaltechnologiesinc.com

S.K. Grover, Advisor (Tech) Asia

+91.9810139639

Marc Townsend, CEO CCTI

International

Mtownsend@cleancoaltechnologiesinc.com

Corporate Office

295 Madison Avenue

New York, NY 10017

Tel. 646.727.4847

